

INTRODUCING INDIA'S FIRST EVER



Powered by



Robotics | Artificial Intelligence | IoT | Design Thinking | 3D
Design | Coding

www.Alphauwin.com

Table of Contents

01

About Us

02

What is Intel Learning Center?

03

Benefits for School & Students

04

Cretile Intel Learning Kit - Details

05

ILC - Lab Contents

06

How We Work with Your School

07

Intel Branded Lab Board & Certificate

08

Curriculum, LMS & Scholarship

09

Responsibilities

10

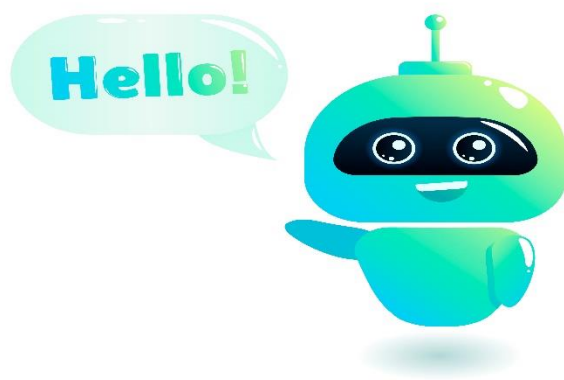
Our Contact Details

ABOUT

The logo for ALPHA U WIN, featuring the word 'ALPHA' in blue, 'U' in orange, and 'WIN' in blue, with a small orange arrow pointing up from the 'I' in 'WIN'.The logo for ALPHA U WIN, featuring the word 'ALPHA' in blue, 'U' in orange, and 'WIN' in blue, with a small orange arrow pointing up from the 'I' in 'WIN'.

is an organized set of professionals who has good vision on the Academic Learning Program for Higher Achievement and propagating the knowledge in the area of – Robotics and Abacus. The training sessions and materials are devised carefully and precisely by our expert team of faculties that will cover up all important aspects of each levels of various courses. We are committed to upgrade the quality of teaching with a support of dedicated team of trainers. We are aiming to nurture the children in bringing out the real leader in him/her having vision as becoming one of the admirable organizations in spreading the values of love, honesty, fun, happiness through our children.

We are specialised in implementing Robotics curriculum in schools and have successfully trained more than 5,000 students over the past 7 years!!!. Many leading schools are under our client list who benefited out of our program.



ABOUT **Cre:tile**



MAKERiNME is an award winning startup founded in 2016 by two industry experts who have 50+ years of experience working with global organizations like Motorola, Intel, Texas Instruments, Tektronix etc.

Cre:tile

is our innovative STEM Education Solution that offers an easy, comprehensive yet cost effective solution for schools.

In our last 7 years of journey we were able to cater to about 2000+ schools and ATLS.

We are conferred with some of the most prestigious awards including National Startup Award & funding by Ministry of Electronics & IT (MeitY)

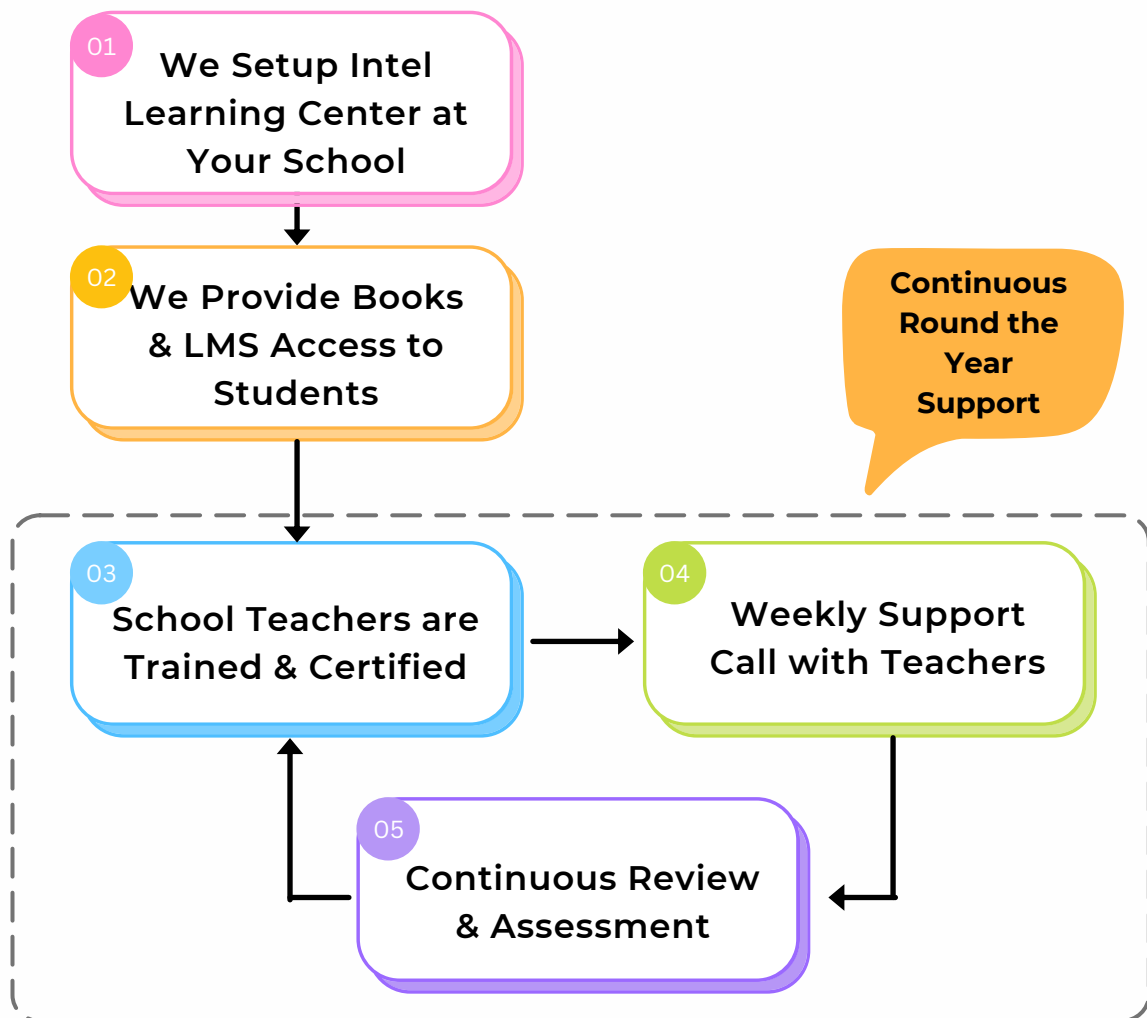
With our latest offering “Intel Learning Center” that is designed in association with Intel Technologies, we welcome your school to be part of this prestigious association!



WHAT IS ILC - INTEL[®] LEARNING CENTER?

A STEM Lab with Intel[®] Powered Robotic Systems that comes with comprehensive year-long support to your teachers to ensure the success for the School Program!

Your Success is Our Responsibility!



Designed for Grades 3 to Grade 10

Classes: once a week per batch

24+ classes per year

BENEFITS OF ILC

1 For School

Promote your school for having lab in collaboration with **Intel**[®]

No Computers or other equipment to be purchased

NEP aligned CBSE & ICSE mapped including AI

2 For Teachers

Get Certified

Detailed session plan, Video Curriculum

Weekly Support throughout the year

3 For Students

Book & LMS Access

Earn up to **Rs. 12000/-** Scholarship every year

Learn Math & Science through fun activities

4 Other Benefits

Competition at the end of program

Rs. 30,000/- worth of awards from Cretille

Opportunity to participate at TechFest

ILC LAB CONTENTS



More details on next page

12 Sets of Cretille Intel Learning Kit (CILK)

Essential component for Coding, Robotics & AI

- 39 Electronics Building Blocks
- 102 Pieces of Construction kit pieces
- Intel Powered System
- Display
- Webcam
- Wireless Keyboard & Mouse
- Wireless Speaker
- Power Bank

3D Printer (Optional)

Spatial Learning



Drone (Optional)

Build autonomous drones



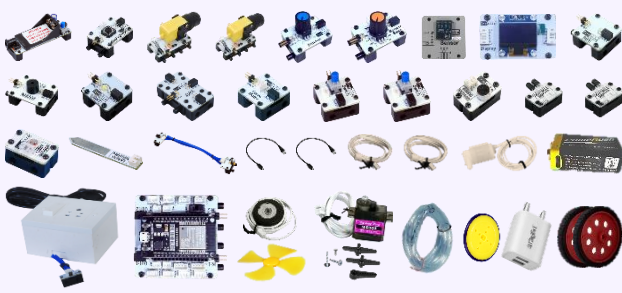
Humanoid (Optional)

AI in Robotics



CRETILE INTEL LEARNING KIT: CONTENTS

39 Electronics/Robotics Blocks & Accessories



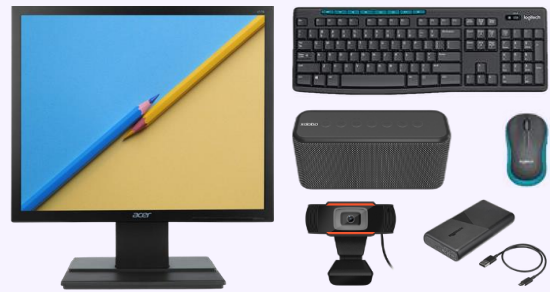
Intel Coding & AI Platform



102 Pcs Construction Kit

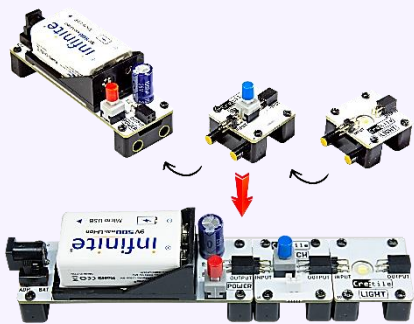


Educational Accessories



CRETILE INTEL LEARNING KIT: FEATURES

Plug-n-Play Blocks



C++/Python/Block Coding



Internet of Things (IoT)

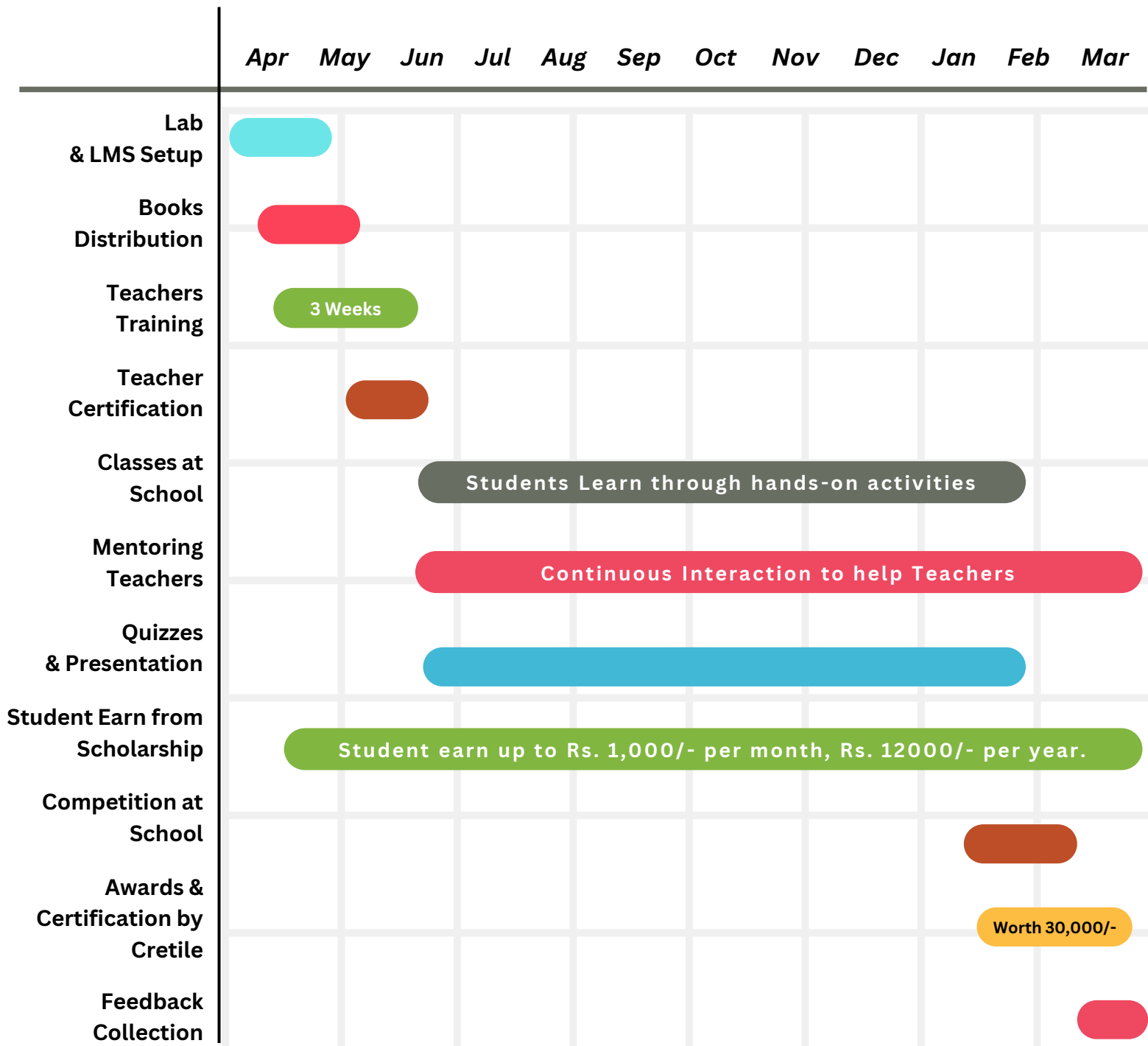


Artificial Intelligence (AI)



IMPLEMENTATION CALENDAR

WE WORK CLOSELY & CONTINUOUSLY WITH YOU!



BOARD OUTSIDE THE SCHOOL LAB



CERTIFICATE



5 LEVEL CURRICULUM

01

Plug-n-Play
Robotics



02

Coding &
Robotics



03

Android App
Development



04

Internet of
Things



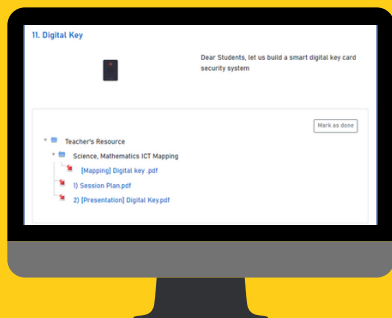
05

Artificial
Intelligence



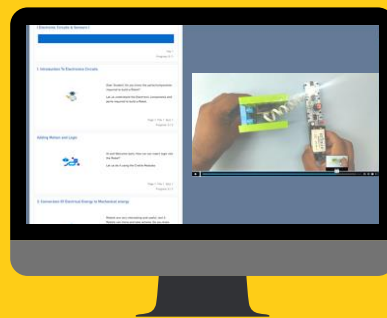
LMS FOR TEACHERS & STUDENTS

TEACHER VIEW



- Teaching Resources
- Session Power Point presentations
- Mapping to CBSE and ICSE Science & Math

STUDENT VIEW



- Learning Resources: Videos & Documents
- Quizzes
- Scholarship (Explained Below)

CASH SCHOLARSHIP FOR EVERY STUDENT

- Scholarship sponsored by our CSR partners
- All students of Grade 1 to 12 are eligible where CRETILE based labs are implemented
- 20 quizzes per month: 4 quizzes from 5 school subjects each
- Quizzes are as per the grade level of student.



Students earn upto
Rs. 1000/- per month or
Rs. 12000/- per year

Login to LMS

Students gets access to 20 quizzes each month

Take Quiz

Answer 10 MCQs in 10 mins & in 3 attempts

Earn

Get Rs. 50/- with 8 out of 10 correct answers

Send to Bank

Send money to Student's / parent's Account any time

ALPHAUWIN RESPONSIBILITY

- **Lab Equipment and maintenance**
- **Teacher Training and Certification**
- **LMS Access to Students**
- **Lab Board**
- **Weekly Teacher Interaction, Support**
- **Student Certification**
- **Competition/Event guidance**

SCHOOL RESPONSIBILITY

- **Allocation of Teacher for program execution**
- **Lab Space, Projector/Smart Display**
- **Furniture: Table / Chairs / storage**
- **High Speed Internet Connection**
- **Lab equipment maintenance (for Plan #3)**

THANK YOU

Reach Us

ALPHAUWIN



+91 9008652240



info@alphauwin.com



www.Alphauwin.com